

TEST REPORT

Report No.: BCTC2502618027R

Applicant: Shenzhen Huafurui Technology Co., Ltd.

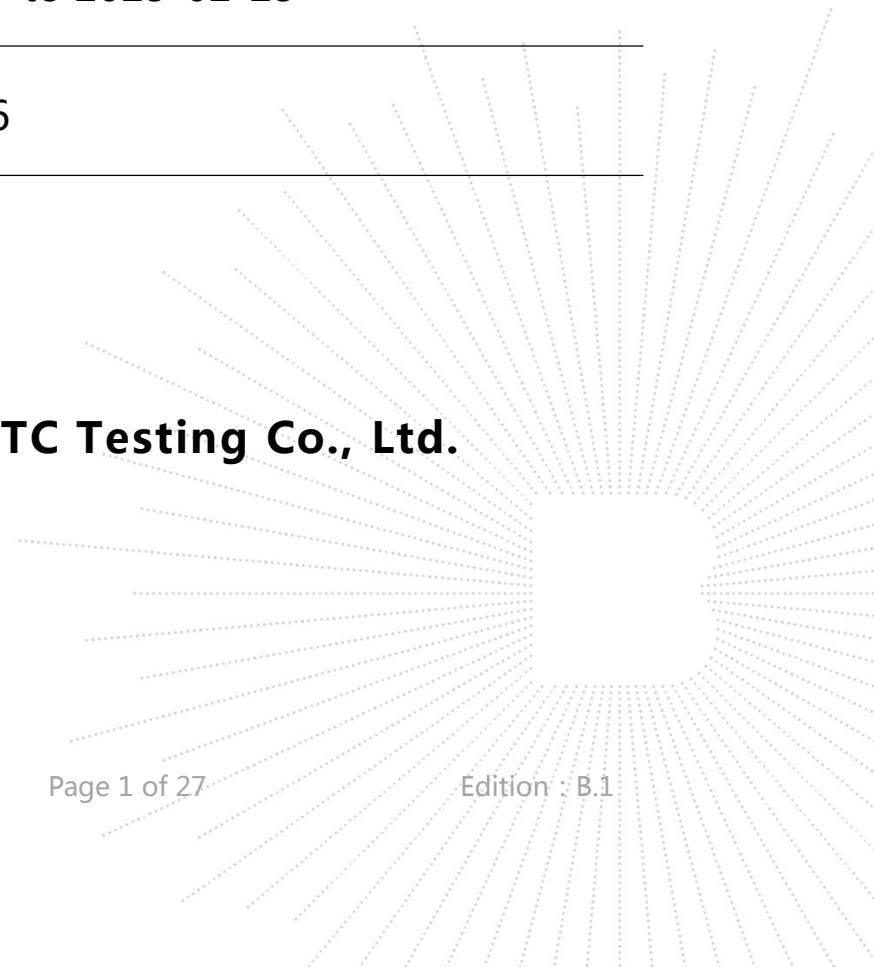
Product Name: Smart watch



Test Model: X3

Tested Date: 2025-02-17 to 2025-02-25

Issued Date: 2025-02-26

Shenzhen BCTC Testing Co., Ltd.



Product Name	Smart watch
Test Model	X3
Applicant	Shenzhen Huafurui Technology Co., Ltd.
Address	Unit 601-03, 6/F, Block A, Building 1, Ganfeng Technology Building, No. 993 Jiaxian Road, Xiangjiaotang Community, Bantian Street, Longgang District, Shenzhen, P.R. China
Manufacturer	Shenzhen Huafurui Technology Co., Ltd.
Address	Unit 601-03, 6/F, Block A, Building 1, Ganfeng Technology Building, No. 993 Jiaxian Road, Xiangjiaotang Community, Bantian Street, Longgang District, Shenzhen, P.R. China
Trademark	CUBOT
Sample Received Date	2025-02-17
Test Type	Entrustment Test
Test Method	Please refer to the following page(s).
Test Requested	<p>1. As specified by client, to screen Lead(Pb), Cadmium(Cd), Mercury(Hg), Chromium(Cr) and Bromine(Br) in the submitted sample(s) by XRF.</p> <p>2. As specified by client, when screening results exceed the XRF screening limit in IEC 62321-3-1:2013, further use of chemical methods are required to test the Lead(Pb), Cadmium(Cd), Mercury(Hg), Hexavalent Chromium(Cr(VI)), Polybrominated Biphenyls(PBBs), Polybrominated Diphenyl Ethers(PBDEs) in the submitted sample(s).</p> <p>3. As specified by client, to test the Diisobutyl phthalate(DIBP), Dibutyl phthalate(DBP), Butyl benzyl phthalate(BBP), Bis(2-ethylhexyl) phthalate(DEHP) in the submitted sample(s).</p>
Test Standard	RoHS Directive 2011/65/EU and amendment Commission Delegated Directive (EU) 2015/863
Test Result	The samples were tested according to the entrusted requirements and test standard, and the test items of the test samples were qualified.
Prepared by:	<div style="display: flex; justify-content: space-between;"> <div style="text-align: center;">  _____ Bear </div> <div style="text-align: center;">  Approved by: _____ Saher Chen </div> </div>



Test Method:
A. XRF screening limits for regulated elements according to IEC 62321-3-1:2013

Element	Screening limits of IEC 62321-3-1:2013		
	Unit (mg/kg)		
	Polymers	Metals	Composite material
Pb	$BL \leq (700-3\sigma) < X < (1300+3\sigma) \leq OL$	$BL \leq (700-3\sigma) < X < (1300+3\sigma) \leq OL$	$BL \leq (500-3\sigma) < X < (1500+3\sigma) \leq OL$
Cd	$BL \leq (70-3\sigma) < X < (130+3\sigma) \leq OL$	$BL \leq (70-3\sigma) < X < (130+3\sigma) \leq OL$	$LOD < X < (150+3\sigma) \leq OL$
Hg	$BL \leq (700-3\sigma) < X < (1300+3\sigma) \leq OL$	$BL \leq (700-3\sigma) < X < (1300+3\sigma) \leq OL$	$BL \leq (500-3\sigma) < X < (1500+3\sigma) \leq OL$
Cr	$BL \leq (700-3\sigma) < X$	$BL \leq (700-3\sigma) < X$	$BL \leq (500-3\sigma) < X$
Br	$BL \leq (300-3\sigma) < X$	--	$BL \leq (250-3\sigma) < X$

B. Screening limits for Phthalates

Test Item(s)	Screening limits Unit (mg/kg)
Diisobutyl phthalate(DIBP)	$BL \leq 600 < X$
Dibutyl phthalate(DBP)	$BL \leq 600 < X$
Butyl benzyl phthalate(BBP)	$BL \leq 600 < X$
Bis(2-ethylhexyl) phthalate(DEHP)	$BL \leq 600 < X$

Note:

- BL = Under the screening limit
- OL = Further chemical test will be conducted while result is above the screening limit
- X= The symbol "X" marks the region where further investigation is necessary
- 3σ= The reproducibility of analytical instruments
- LOD= Detection limit
- "-" = Not regulated.

C. Chemical Test

Test Item(s)	Test Method	Measured Equipment(s)	MDL	Limit
Lead (Pb)	IEC 62321-5:2013 Ed.1.0	ICP-OES	2 mg/kg	1000 mg/kg
Cadmium (Cd)	IEC 62321-5:2013 Ed.1.0	ICP-OES	2 mg/kg	100 mg/kg
Mercury (Hg)	IEC 62321-4:2013+AMD1:2017	ICP-OES	2 mg/kg	1000 mg/kg
Hexavalent Chromium (Cr(VI))	IEC 62321-7-1:2015 Ed.1.0	UV-VIS	0.10 µg/cm ²	1000 mg/kg
	IEC 62321-7-2:2017 Ed.1.0		8 mg/kg	
Polybrominated Biphenyls (PBBs)	IEC 62321-6:2015 Ed.1.0	GC-MS/ HPLC-DAD	100 mg/kg	1000 mg/kg
Polybrominated Diphenyl Ethers (PBDEs)	IEC 62321-6:2015 Ed.1.0	GC-MS/ HPLC-DAD	100 mg/kg	1000 mg/kg
Diisobutyl phthalate (DIBP)	IEC 62321-8:2017 Ed.1.0	GC-MS	50 mg/kg	1000 mg/kg
Dibutyl phthalate (DBP)	IEC 62321-8:2017 Ed.1.0	GC-MS	50 mg/kg	1000 mg/kg
Butyl benzyl phthalate (BBP)	IEC 62321-8:2017 Ed.1.0	GC-MS	50 mg/kg	1000 mg/kg
Bis(2-ethylhexyl) phthalate (DEHP)	IEC 62321-8:2017 Ed.1.0	GC-MS	50 mg/kg	1000 mg/kg

Test Result(s):

Sample No.	Sample Description	Test Item(s)	XRF Screening Test Unit (mg/kg)	Phthalates Screening Test Unit (mg/kg)	Chemical Test Unit (mg/kg)	Conclusion	Sample Received/ Resubmitted Date
1	Black rubber	Pb	BL	/	/	PASS	2024-12-11
		Cd	BL	/	/		
		Hg	BL	/	/		
		Cr(Cr(VI))	BL	/	/		
		Br(PBBs&PBDEs)	BL	/	/		
		DIBP	/	/	N.D.		
		DBP	/	/	N.D.		
		DEHP	/	/	N.D.		
2	Metal with black plating	Pb	BL	/	/	PASS	2024-12-11
		Cd	BL	/	/		
		Hg	BL	/	/		
		Cr(Cr(VI))	490487	/	Negative		
		Br(PBBs&PBDEs)	/	/	/		
		DIBP	/	/	/		
		DBP	/	/	/		
		DEHP	/	/	/		
3	Gray rubber	Pb	BL	/	/	PASS	2024-12-11
		Cd	BL	/	/		
		Hg	BL	/	/		
		Cr(Cr(VI))	BL	/	/		
		Br(PBBs&PBDEs)	BL	/	/		
		DIBP	/	/	N.D.		
		DBP	/	/	N.D.		
		DEHP	/	/	N.D.		
4	Metal with silver gray plating	Pb	BL	/	/	PASS	2024-12-11
		Cd	BL	/	/		
		Hg	BL	/	/		
		Cr(Cr(VI))	578180	/	Negative		
		Br(PBBs&PBDEs)	/	/	/		
		DIBP	/	/	/		
		DBP	/	/	/		



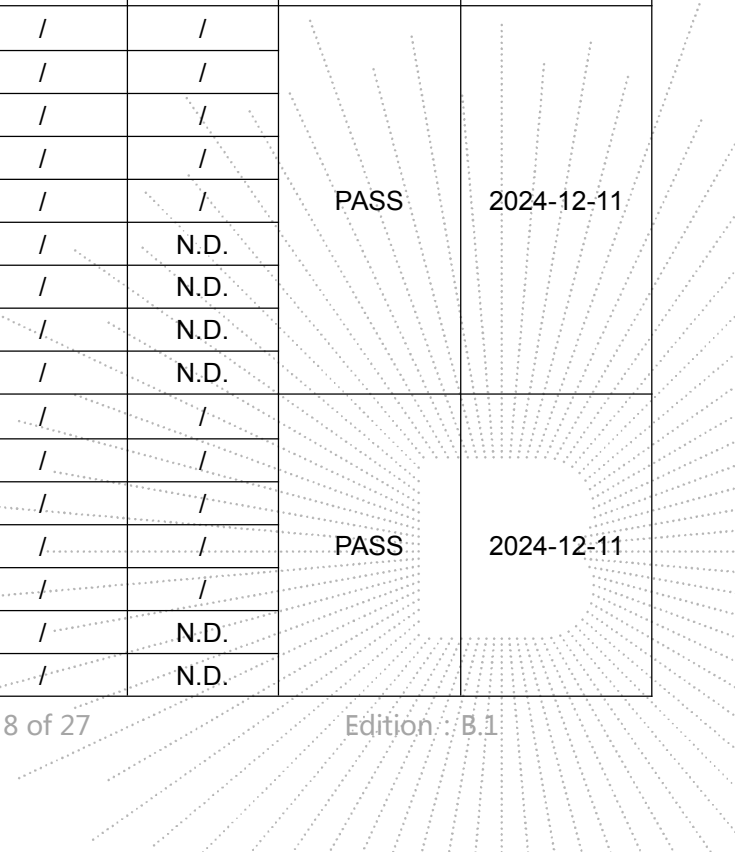
Sample No.	Sample Description	Test Item(s)	XRF Screening Test Unit (mg/kg)	Phthalates Screening Test Unit (mg/kg)	Chemical Test Unit (mg/kg)	Conclusion	Sample Received/ Resubmitted Date
		BBP	/	/	/		
		DEHP	/	/	/		
5	Metal with silver gray plating	Pb	BL	/	/	PASS	2024-12-11
		Cd	BL	/	/		
		Hg	BL	/	/		
		Cr(Cr(VI))	76625	/	Negative		
		Br(PBBs&PBDEs)	/	/	/		
		DIBP	/	/	/		
		DBP	/	/	/		
		BBP	/	/	/		
		DEHP	/	/	/		
6	Black glass	Pb	BL	/	/	PASS	2024-12-11
		Cd	BL	/	/		
		Hg	BL	/	/		
		Cr(Cr(VI))	BL	/	/		
		Br(PBBs&PBDEs)	BL	/	/		
		DIBP	/	BL	/		
		DBP	/	BL	/		
		BBP	/	BL	/		
DEHP	/	BL	/				
7	Black FPC	Pb	BL	/	/	PASS	2024-12-11
		Cd	BL	/	/		
		Hg	BL	/	/		
		Cr(Cr(VI))	BL	/	/		
		Br(PBBs&PBDEs)	BL	/	/		
		DIBP	/	BL	/		
		DBP	/	BL	/		
		BBP	/	BL	/		
DEHP	/	BL	/				
8	Silver black plastic	Pb	BL	/	/	PASS	2024-12-11
		Cd	BL	/	/		
		Hg	BL	/	/		
		Cr(Cr(VI))	BL	/	/		
		Br(PBBs&PBDEs)	BL	/	/		
		DIBP	/	BL	/		
DBP	/	BL	/				

CO.,LTD

Sample No.	Sample Description	Test Item(s)	XRF Screening Test Unit (mg/kg)	Phthalates Screening Test Unit (mg/kg)	Chemical Test Unit (mg/kg)	Conclusion	Sample Received/ Resubmitted Date
		BBP	/	BL	/		
		DEHP	/	BL	/		
9	Silver magnet	Pb	BL	/	/	PASS	2024-12-11
		Cd	BL	/	/		
		Hg	BL	/	/		
		Cr(Cr(VI))	BL	/	/		
		Br(PBBs&PBDEs)	/	/	/		
		DIBP	/	BL	/		
		DBP	/	BL	/		
		BBP	/	BL	/		
		DEHP	/	BL	/		
10	Gold metal pin	Pb	5406	/	19616#	PASS	2024-12-11
		Cd	BL	/	/		
		Hg	BL	/	/		
		Cr(Cr(VI))	1401	/	Negative		
		Br(PBBs&PBDEs)	/	/	/		
		DIBP	/	/	/		
		DBP	/	/	/		
		BBP	/	/	/		
DEHP	/	/	/				
11	Orange plastic	Pb	BL	/	/	PASS	2024-12-11
		Cd	BL	/	/		
		Hg	BL	/	/		
		Cr(Cr(VI))	BL	/	/		
		Br(PBBs&PBDEs)	BL	/	/		
		DIBP	/	BL	/		
		DBP	/	BL	/		
		BBP	/	BL	/		
DEHP	/	BL	/				
12	Black wire jacket	Pb	BL	/	/	PASS	2024-12-11
		Cd	BL	/	/		
		Hg	BL	/	/		
		Cr(Cr(VI))	BL	/	/		
		Br(PBBs&PBDEs)	BL	/	/		
		DIBP	/	/	N.D.		
DBP	/	/	N.D.				

CHENZHEN

Sample No.	Sample Description	Test Item(s)	XRF Screening Test Unit (mg/kg)	Phthalates Screening Test Unit (mg/kg)	Chemical Test Unit (mg/kg)	Conclusion	Sample Received/ Resubmitted Date
		BBP	/	/	N.D.		
		DEHP	/	/	N.D.		
13	Black plastic	Pb	BL	/	/	PASS	2024-12-11
		Cd	BL	/	/		
		Hg	BL	/	/		
		Cr(Cr(VI))	BL	/	/		
		Br(PBBs&PBDEs)	BL	/	/		
		DIBP	/	/	N.D.		
		DBP	/	/	N.D.		
		BBP	/	/	N.D.		
		DEHP	/	/	163		
14	Silver metal	Pb	BL	/	/	PASS	2024-12-11
		Cd	BL	/	/		
		Hg	BL	/	/		
		Cr(Cr(VI))	BL	/	/		
		Br(PBBs&PBDEs)	/	/	/		
		DIBP	/	/	/		
		DBP	/	/	/		
		DEHP	/	/	/		
15	Black FPC	Pb	BL	/	/	PASS	2024-12-11
		Cd	BL	/	/		
		Hg	BL	/	/		
		Cr(Cr(VI))	BL	/	/		
		Br(PBBs&PBDEs)	BL	/	/		
		DIBP	/	/	N.D.		
		DBP	/	/	N.D.		
		DEHP	/	/	N.D.		
16	SMD LED	Pb	BL	/	/	PASS	2024-12-11
		Cd	BL	/	/		
		Hg	BL	/	/		
		Cr(Cr(VI))	BL	/	/		
		Br(PBBs&PBDEs)	BL	/	/		
		DIBP	/	/	N.D.		
		DBP	/	/	N.D.		



Sample No.	Sample Description	Test Item(s)	XRF Screening Test Unit (mg/kg)	Phthalates Screening Test Unit (mg/kg)	Chemical Test Unit (mg/kg)	Conclusion	Sample Received/ Resubmitted Date
		BBP	/	/	N.D.		
		DEHP	/	/	N.D.		
17	Silver metal	Pb	BL	/	/	PASS	2024-12-11
		Cd	BL	/	/		
		Hg	BL	/	/		
		Cr(Cr(VI))	BL	/	/		
		Br(PBBs&PBDEs)	/	/	/		
		DIBP	/	/	/		
		DBP	/	/	/		
		BBP	/	/	/		
		DEHP	/	/	/		
18	Blue wire jacket	Pb	BL	/	/	PASS	2024-12-11
		Cd	BL	/	/		
		Hg	BL	/	/		
		Cr(Cr(VI))	BL	/	/		
		Br(PBBs&PBDEs)	BL	/	/		
		DIBP	/	BL	/		
		DBP	/	BL	/		
		BBP	/	BL	/		
		DEHP	/	BL	/		
19	Red wire jacket	Pb	BL	/	/	PASS	2024-12-11
		Cd	BL	/	/		
		Hg	BL	/	/		
		Cr(Cr(VI))	BL	/	/		
		Br(PBBs&PBDEs)	BL	/	/		
		DIBP	/	BL	/		
		DBP	/	BL	/		
		BBP	/	BL	/		
		DEHP	/	BL	/		
20	Black rubber	Pb	BL	/	/	PASS	2024-12-11
		Cd	BL	/	/		
		Hg	BL	/	/		
		Cr(Cr(VI))	BL	/	/		
		Br(PBBs&PBDEs)	BL	/	/		
		DIBP	/	/	N.D.		
		DBP	/	/	N.D.		

Sample No.	Sample Description	Test Item(s)	XRF Screening Test Unit (mg/kg)	Phthalates Screening Test Unit (mg/kg)	Chemical Test Unit (mg/kg)	Conclusion	Sample Received/ Resubmitted Date
		BBP	/	/	N.D.		
		DEHP	/	/	N.D.		
21	Gold metal	Pb	BL	/	/	PASS	2024-12-11
		Cd	BL	/	/		
		Hg	BL	/	/		
		Cr(Cr(VI))	BL	/	/		
		Br(PBBs&PBDEs)	/	/	/		
		DIBP	/	/	/		
		DBP	/	/	/		
		BBP	/	/	/		
		DEHP	/	/	/		
22	Black wire jacket	Pb	BL	/	/	PASS	2024-12-11
		Cd	BL	/	/		
		Hg	BL	/	/		
		Cr(Cr(VI))	BL	/	/		
		Br(PBBs&PBDEs)	BL	/	/		
		DIBP	/	BL	/		
		DBP	/	BL	/		
		BBP	/	BL	/		
		DEHP	/	BL	/		
23	Red wire jacket	Pb	BL	/	/	PASS	2024-12-11
		Cd	BL	/	/		
		Hg	BL	/	/		
		Cr(Cr(VI))	BL	/	/		
		Br(PBBs&PBDEs)	BL	/	/		
		DIBP	/	BL	/		
		DBP	/	BL	/		
		BBP	/	BL	/		
		DEHP	/	BL	/		
24	Black PCB	Pb	BL	/	/	PASS	2024-12-11
		Cd	BL	/	/		
		Hg	BL	/	/		
		Cr(Cr(VI))	BL	/	/		
		Br(PBBs&PBDEs)	4909	/	N.D.		
		DIBP	/	BL	/		
		DBP	/	BL	/		

TESTED
 TO
 OVER
 t See

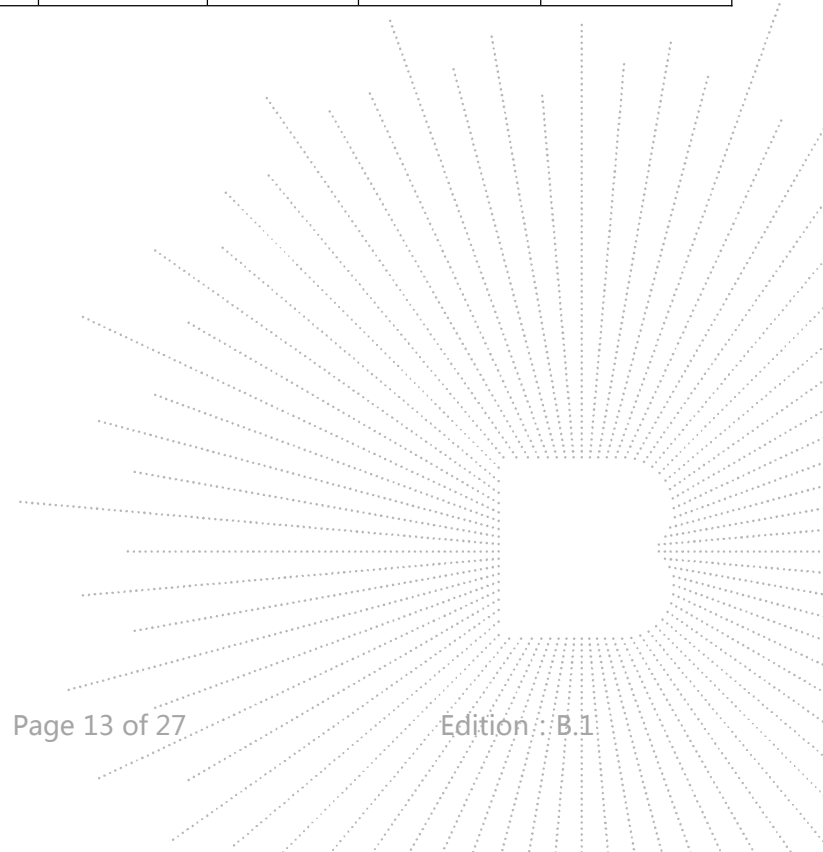
Sample No.	Sample Description	Test Item(s)	XRF Screening Test Unit (mg/kg)	Phthalates Screening Test Unit (mg/kg)	Chemical Test Unit (mg/kg)	Conclusion	Sample Received/ Resubmitted Date
		BBP	/	BL	/		
		DEHP	/	BL	/		
25	Tin solder	Pb	BL	/	/	PASS	2024-12-11
		Cd	BL	/	/		
		Hg	BL	/	/		
		Cr(Cr(VI))	BL	/	/		
		Br(PBBs&PBDEs)	/	/	/		
		DIBP	/	/	/		
		DBP	/	/	/		
		BBP	/	/	/		
		DEHP	/	/	/		
26	Black chip	Pb	BL	/	/	PASS	2024-12-11
		Cd	BL	/	/		
		Hg	BL	/	/		
		Cr(Cr(VI))	BL	/	/		
		Br(PBBs&PBDEs)	BL	/	/		
		DIBP	/	BL	/		
		DBP	/	BL	/		
		BBP	/	BL	/		
DEHP	/	BL	/				
27	Gray plastic	Pb	BL	/	/	PASS	2024-12-11
		Cd	BL	/	/		
		Hg	BL	/	/		
		Cr(Cr(VI))	BL	/	/		
		Br(PBBs&PBDEs)	BL	/	/		
		DIBP	/	/	N.D.		
		DBP	/	/	N.D.		
		BBP	/	/	N.D.		
DEHP	/	/	N.D.				
28	Crystal	Pb	BL	/	/	PASS	2024-12-11
		Cd	BL	/	/		
		Hg	BL	/	/		
		Cr(Cr(VI))	BL	/	/		
		Br(PBBs&PBDEs)	/	/	/		
		DIBP	/	/	/		
		DBP	/	/	/		



Sample No.	Sample Description	Test Item(s)	XRF Screening Test Unit (mg/kg)	Phthalates Screening Test Unit (mg/kg)	Chemical Test Unit (mg/kg)	Conclusion	Sample Received/ Resubmitted Date
		BBP	/	/	/		
		DEHP	/	/	/		
29	SMD capacitor	Pb	BL	/	/	PASS	2024-12-11
		Cd	BL	/	/		
		Hg	BL	/	/		
		Cr(Cr(VI))	BL	/	/		
		Br(PBBs&PBDEs)	BL	/	/		
		DIBP	/	BL	/		
		DBP	/	BL	/		
		BBP	/	BL	/		
		DEHP	/	BL	/		
30	SMD resistor	Pb	BL	/	/	PASS	2024-12-11
		Cd	BL	/	/		
		Hg	BL	/	/		
		Cr(Cr(VI))	6424	/	N.D.		
		Br(PBBs&PBDEs)	BL	/	/		
		DIBP	/	BL	/		
		DBP	/	BL	/		
		BBP	/	BL	/		
DEHP	/	BL	/				
31	Silver metal	Pb	BL	/	/	PASS	2025-02-17
		Cd	BL	/	/		
		Hg	BL	/	/		
		Cr(Cr(VI))	77692	/	Negative		
		Br(PBBs&PBDEs)	/	/	/		
		DIBP	/	/	/		
		DBP	/	/	/		
		BBP	/	/	/		
DEHP	/	/	/				
32	Gray rubber	Pb	BL	/	/	PASS	2025-02-17
		Cd	BL	/	/		
		Hg	BL	/	/		
		Cr(Cr(VI))	BL	/	/		
		Br(PBBs&PBDEs)	BL	/	/		
		DIBP	/	/	N.D.		
DBP	/	/	N.D.				

CO.,LTD

Sample No.	Sample Description	Test Item(s)	XRF Screening Test Unit (mg/kg)	Phthalates Screening Test Unit (mg/kg)	Chemical Test Unit (mg/kg)	Conclusion	Sample Received/ Resubmitted Date
		BBP	/	/	N.D.		
		DEHP	/	/	N.D.		
33	Silver gray metal	Pb	BL	/	/	PASS	2025-02-17
		Cd	BL	/	/		
		Hg	BL	/	/		
		Cr(Cr(VI))	793167	/	Negative		
		Br(PBBs&PBDEs)	/	/	/		
		DIBP	/	/	/		
		DBP	/	/	/		
		BBP	/	/	/		
		DEHP	/	/	/		
34	Black rubber	Pb	BL	/	/	PASS	2025-02-17
		Cd	BL	/	/		
		Hg	BL	/	/		
		Cr(Cr(VI))	BL	/	/		
		Br(PBBs&PBDEs)	BL	/	/		
		DIBP	/	/	N.D.		
		DBP	/	/	N.D.		
		BBP	/	/	N.D.		
DEHP	/	/	N.D.				

Note:

-MDL = Method Detection Limit

-N.D. = Not Detected (<MDL)

-mg/kg = ppm = parts per million

-“ / ”= Not conducted.

-The sample is negative for Cr(VI) – The Cr(VI) concentration is below $0.10\mu\text{g}/\text{cm}^2$. The coating is considered a non-Cr(VI) based coating.

-The sample is positive for Cr(VI) – The Cr(VI) concentration is above $0.13\mu\text{g}/\text{cm}^2$. The sample coating is considered to contain Cr(VI).

-The result is considered to be inconclusive -The Cr(VI) concentration is between the $0.10\mu\text{g}/\text{cm}^2$ and $0.13\mu\text{g}/\text{cm}^2$. Unavoidable coating variations may influence the determination.

-#=According to the exemption clause 6(c) in annex III of directive (2011/65/EU), Lead is exempted as copper alloy containing up to 4% lead by weight.

-The result data of sample 1 to 30 in this report are the copy of the result data of sample 1 to 30 in this report: BCTC2412406298R.

Remark:

-The screening results are only used for reference.

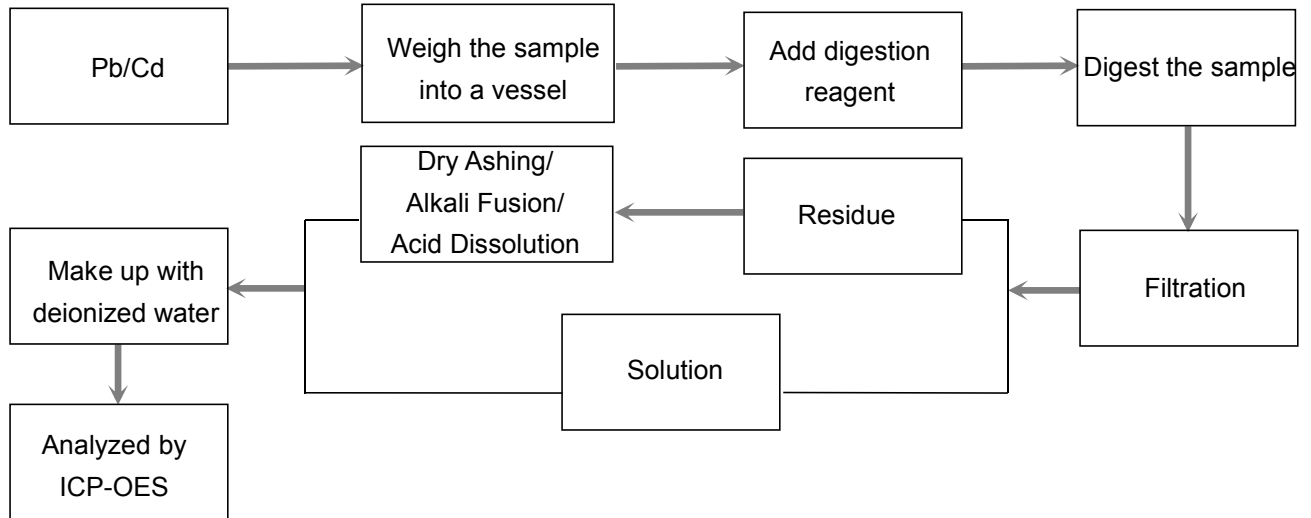
-When conducting the test for Hexavalent Chromium, XRF was introduced to screen Chromium exclusively;
When conducting the test for PBBs&PBDEs, XRF was introduced to screen Br Exclusively.



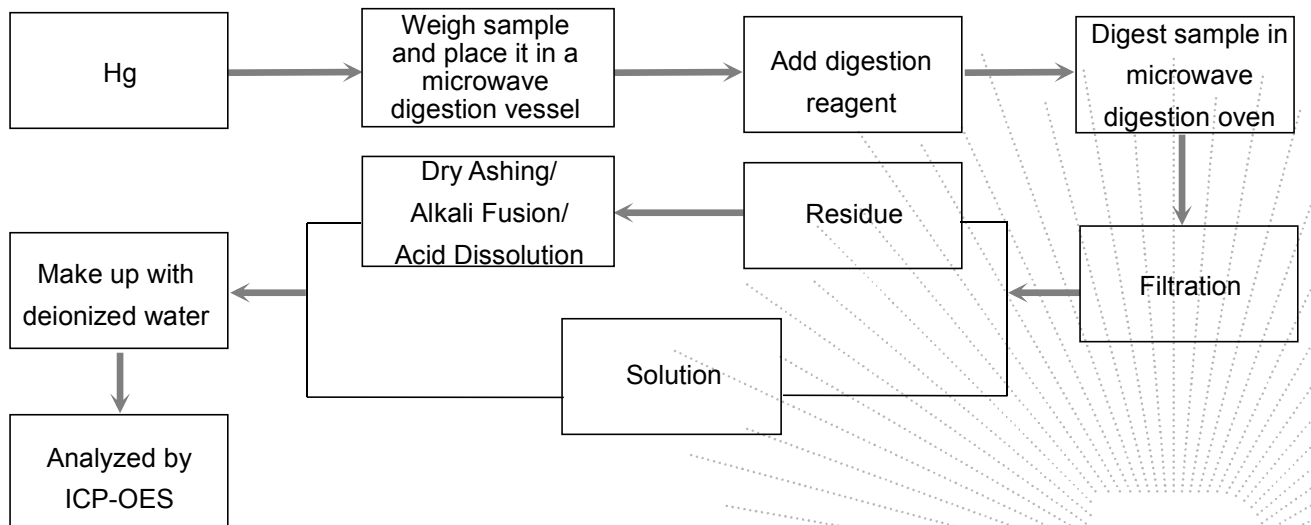
Test Process:

The sample(s) had been dissolved totally tested for Lead, Cadmium, Mercury.

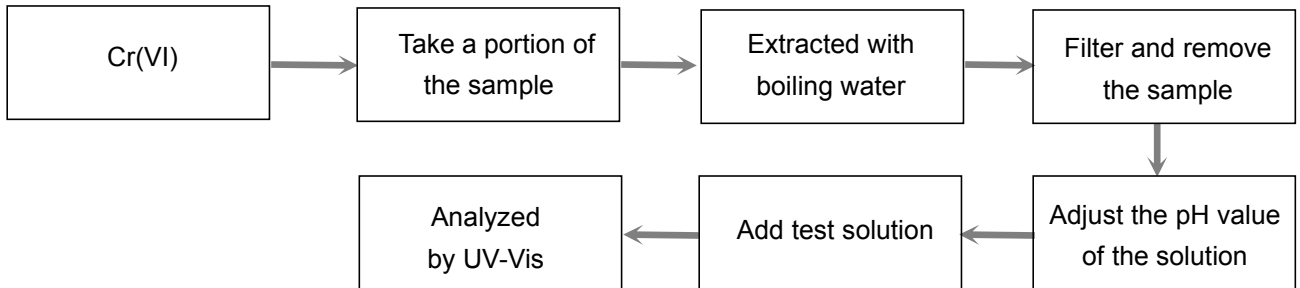
◆ IEC 62321-5:2013 Ed.1.0



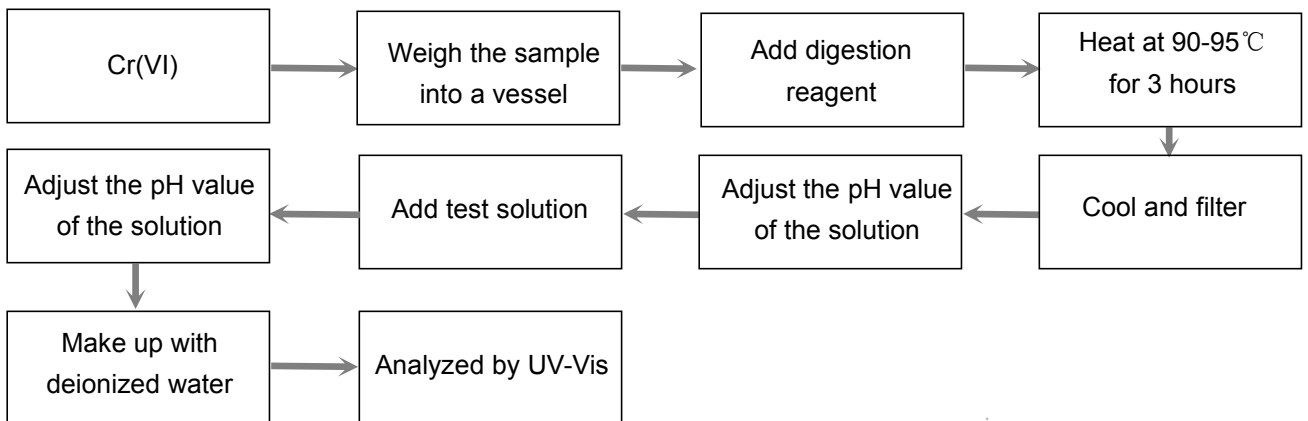
◆ IEC 62321-4:2013+AMD1:2017



◆ IEC 62321-7-1:2015 Ed.1.0

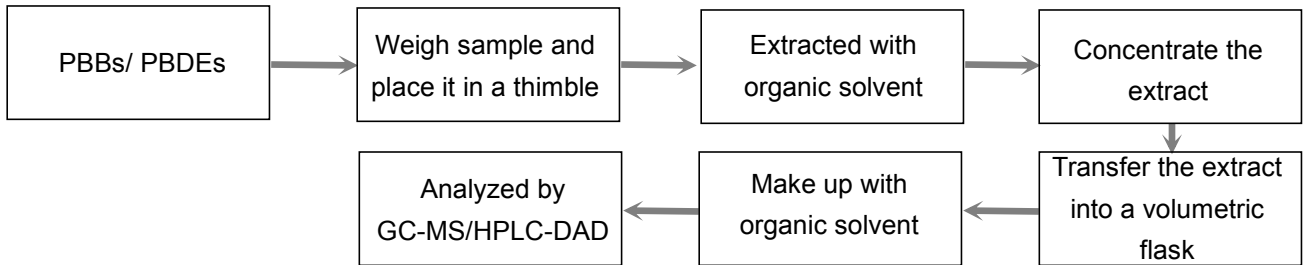


◆ IEC 62321-7-2:2017 Ed.1.0

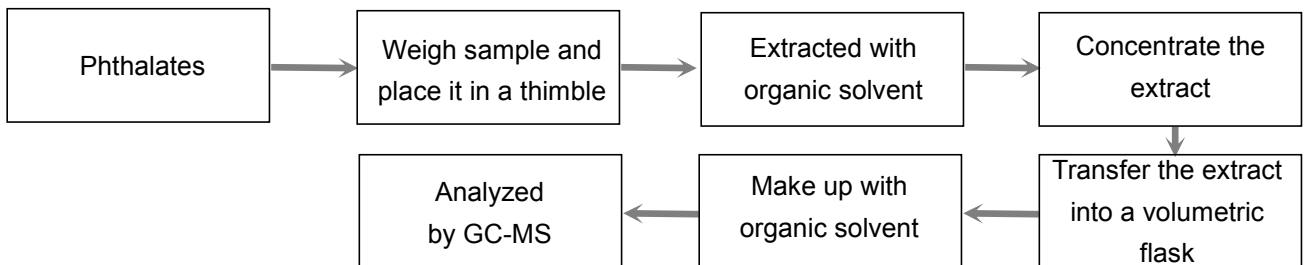


TEE
 TO
 OVE
 t See

◆ IEC 62321-6:2015 Ed.1.0



◆ IEC 62321-8:2017 Ed.1.0



Photograph of Sample



Fig.1



Fig.2



Fig.3



Fig.4



Fig.5



Fig.6



Fig.7

Photo(s) of the tested component(s)

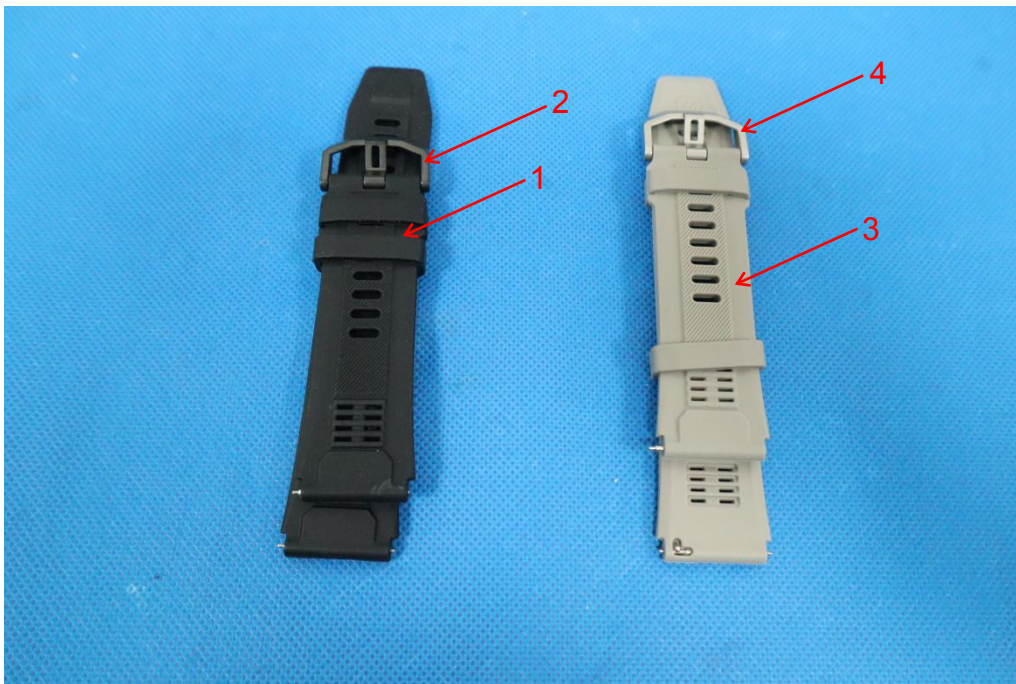


Fig.8

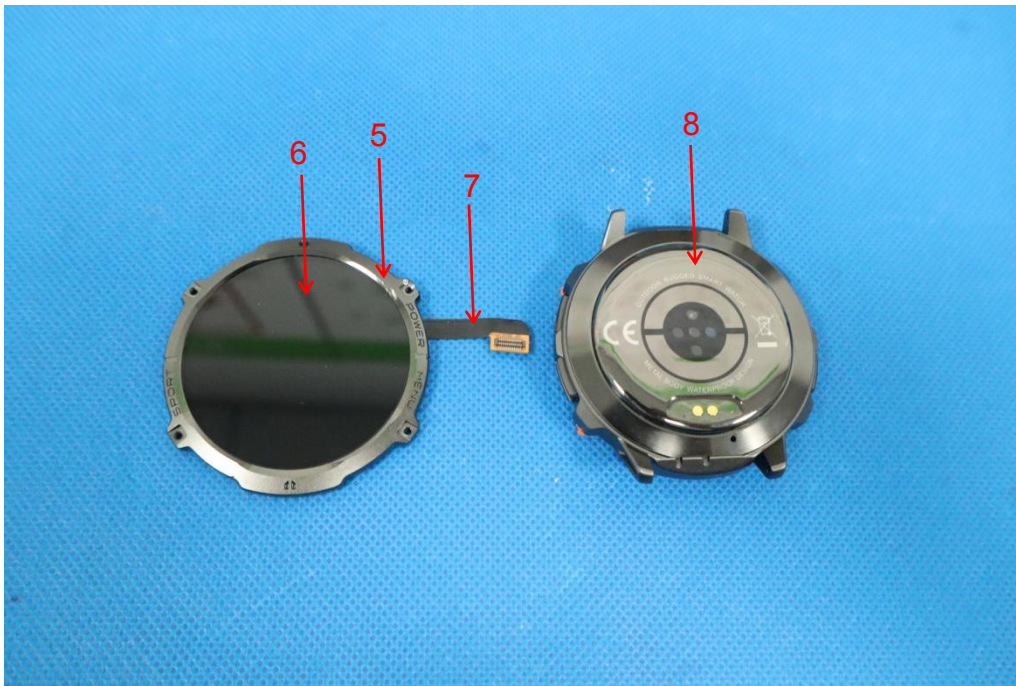


Fig.9

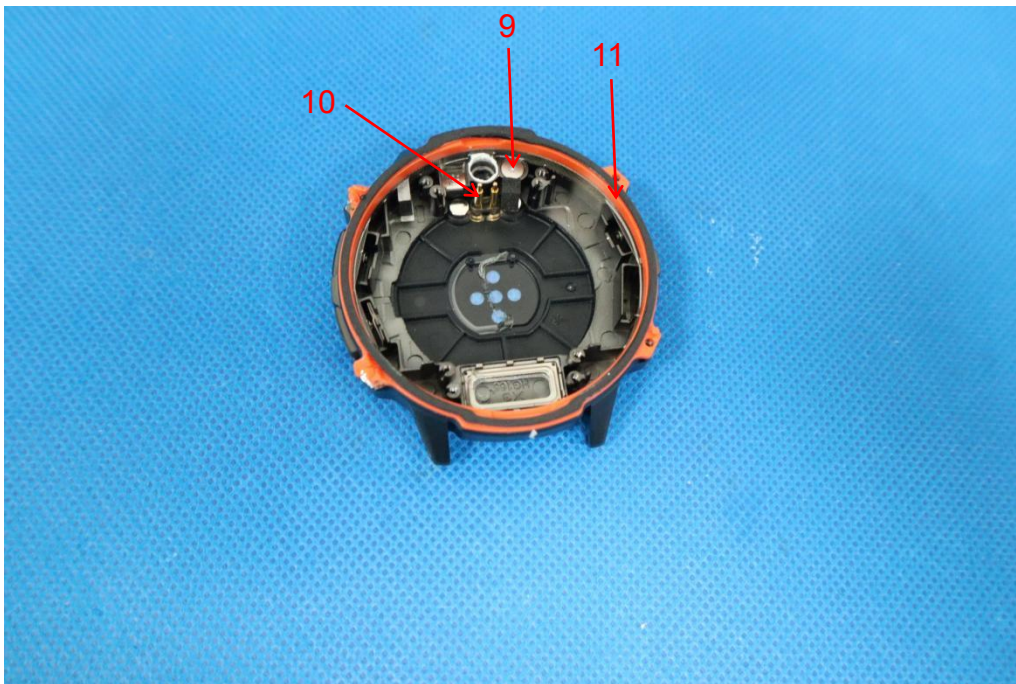


Fig.10



Fig.11

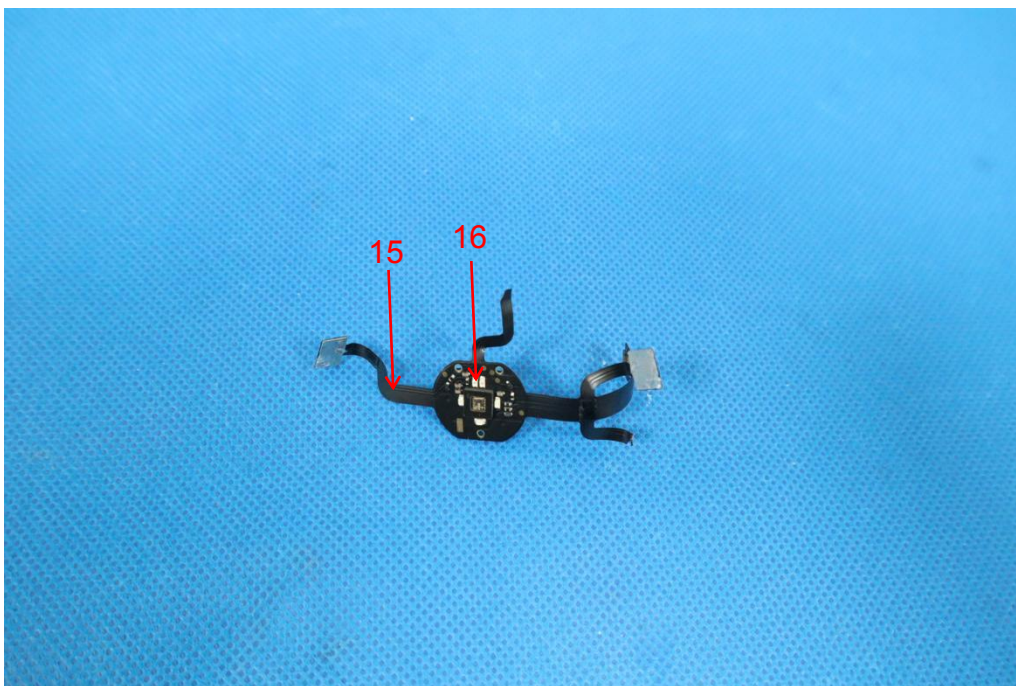


Fig.12

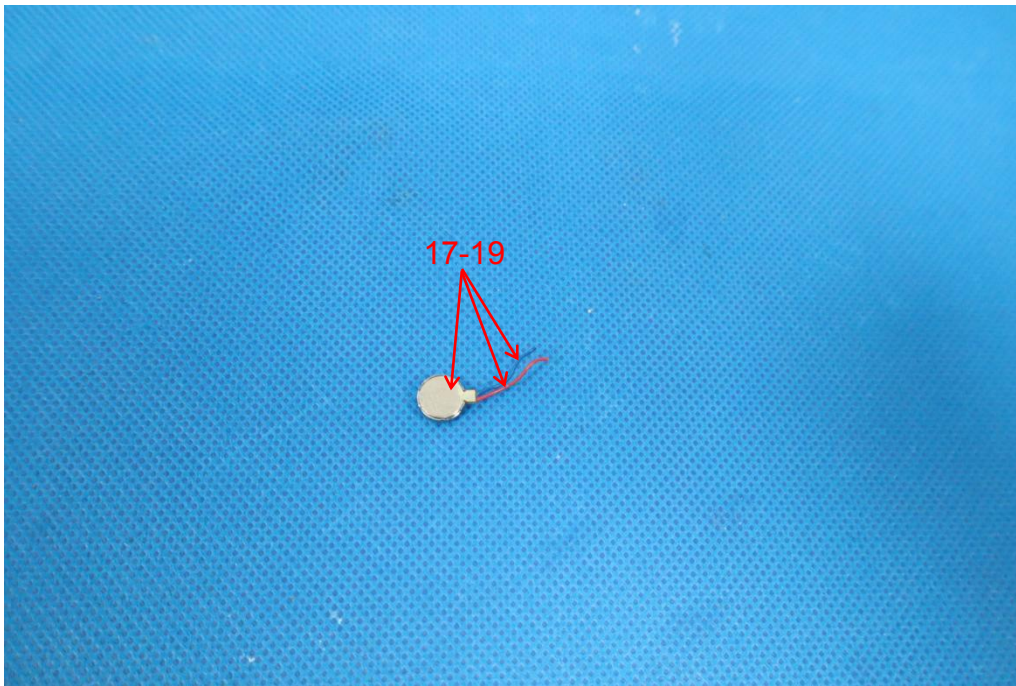


Fig.13

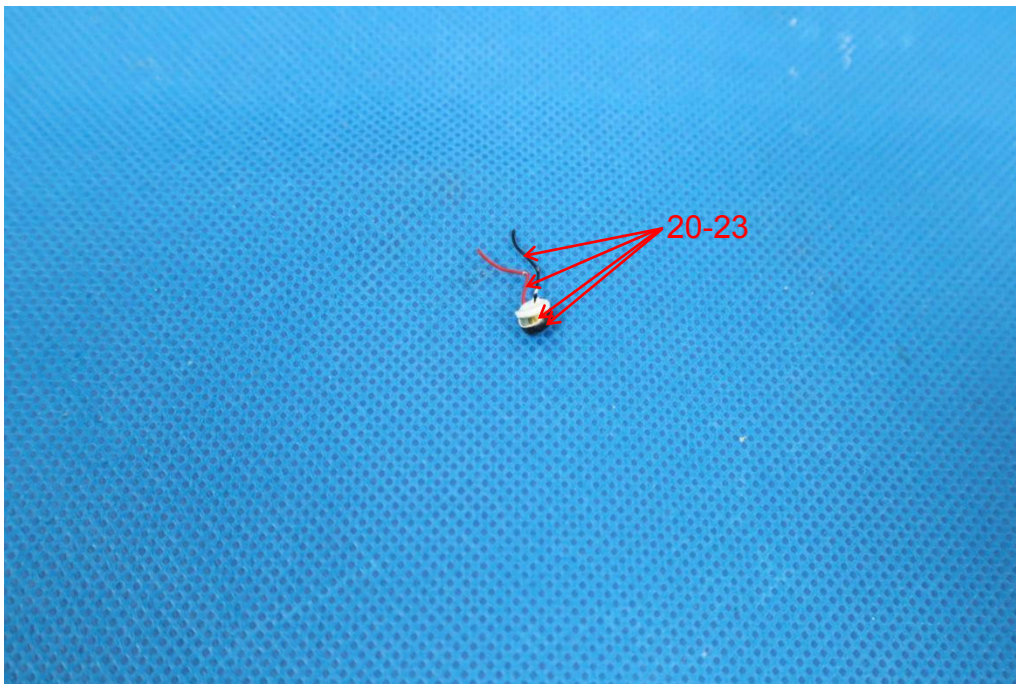
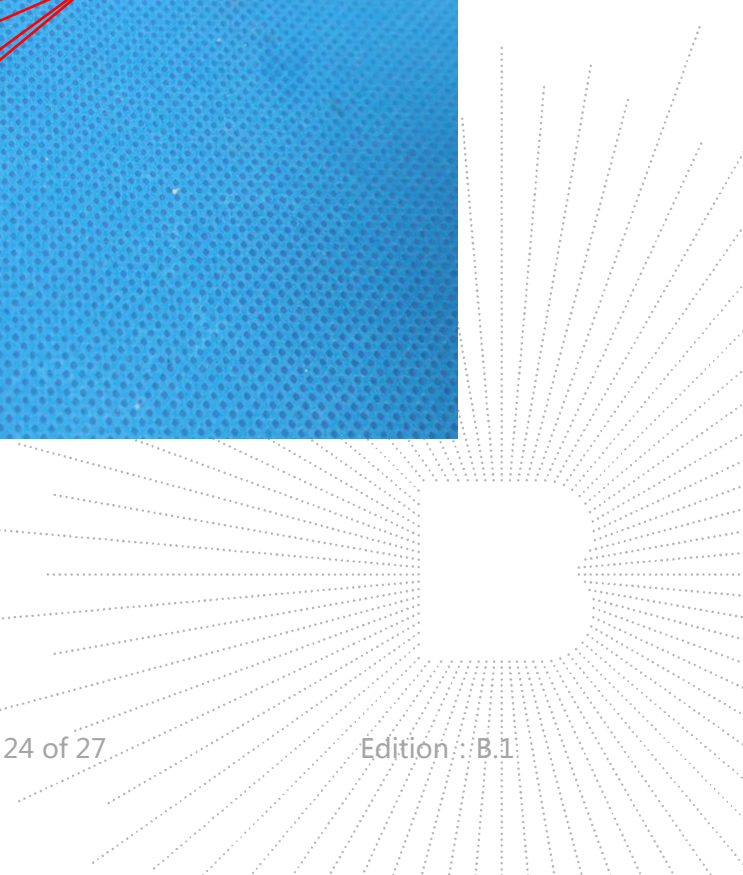


Fig.14

TE
FO
DVI
se



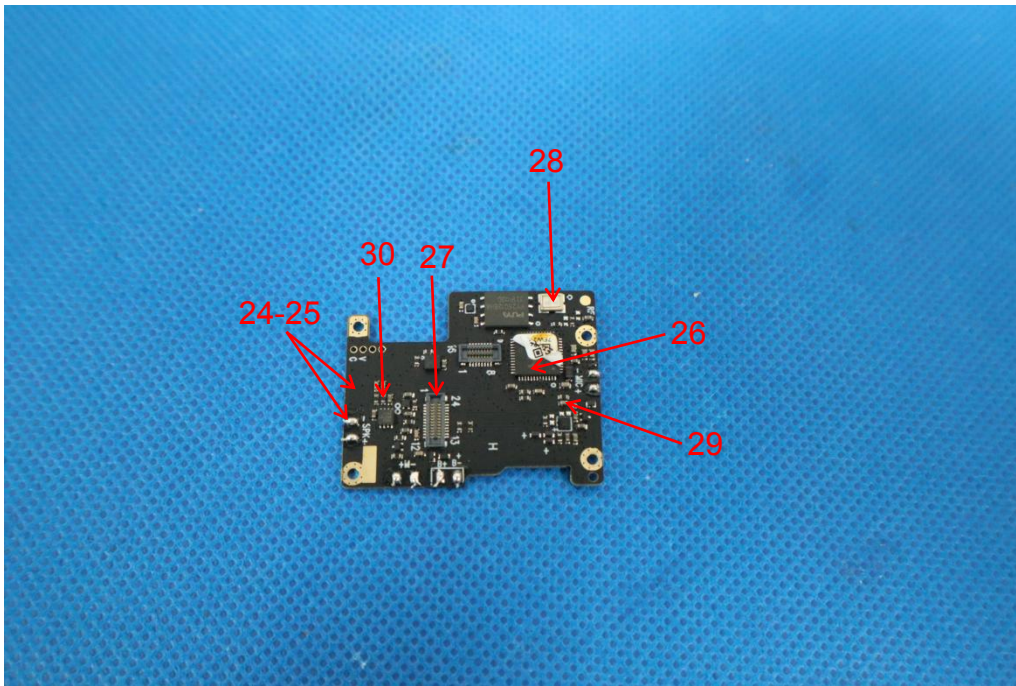


Fig.15

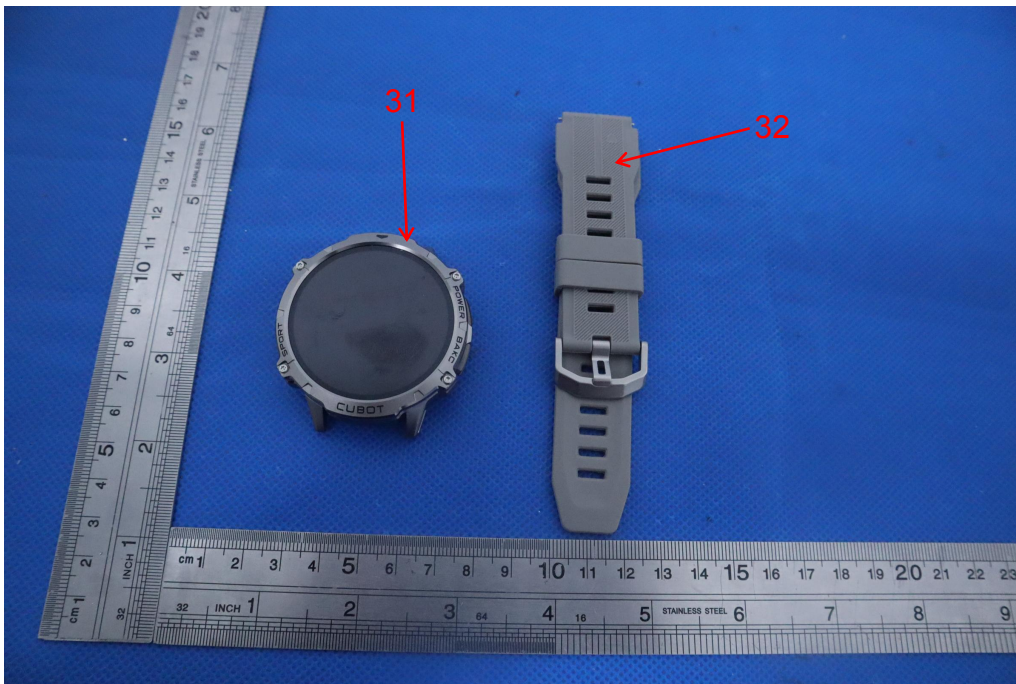
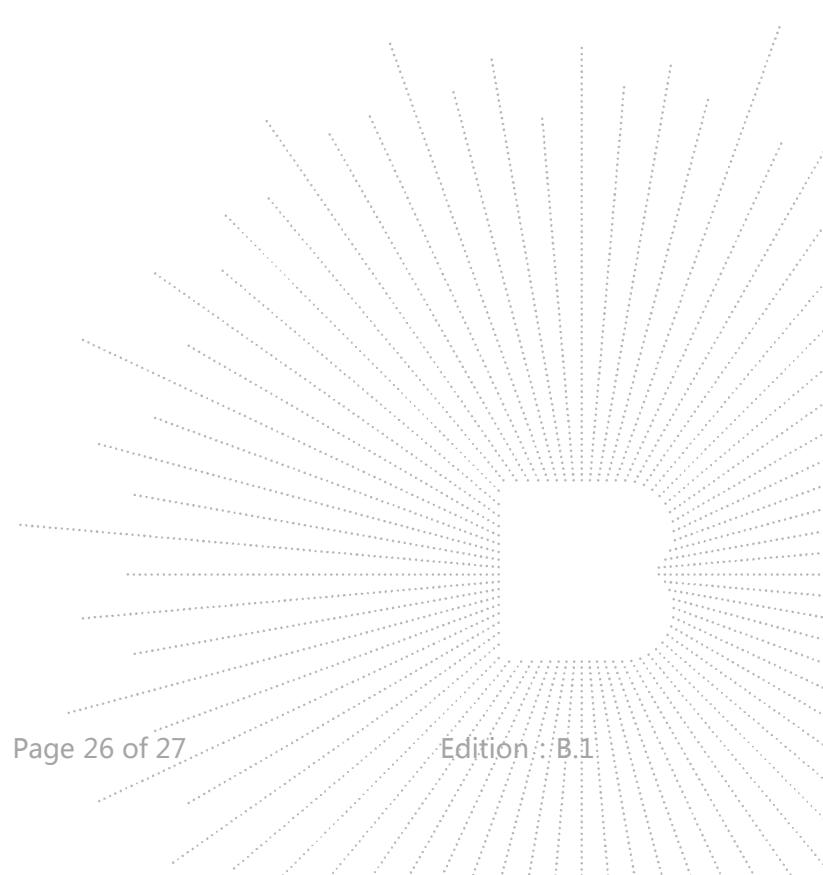


Fig.16



Fig.17



STATEMENT

1. The equipment lists are traceable to the national reference standards.
2. The test report can not be partially copied unless prior written approval is issued from our lab.
3. The test report is invalid without the "special seal for inspection and testing".
4. The test report is invalid without the signature of the approver.
5. The test process and test result is only related to the Unit Under Test.
6. Sample information is provided by the client and the laboratory is not responsible for its authenticity.
7. The quality system of our laboratory is in accordance with ISO/IEC17025.
8. If there is any objection to this test report, the client should inform issuing laboratory within 15 days from the date of receiving test report.

Address:

1-2/F., Building B, Pengzhou Industrial Park, No.158, Fuyuan 1st Road, Zhancheng, Fuhai Subdistrict, Bao'an District, Shenzhen, Guangdong, China

TEL : 400-788-9558

P. C. : 518103

FAX : 0755-33229357

Website : <http://www.chnbctc.com>

Consultation E-mail : bctc@bctc-lab.com.cn

Complaint/Advice E-mail : advice@bctc-lab.com.cn

※※※※※ END ※※※※※

2017

